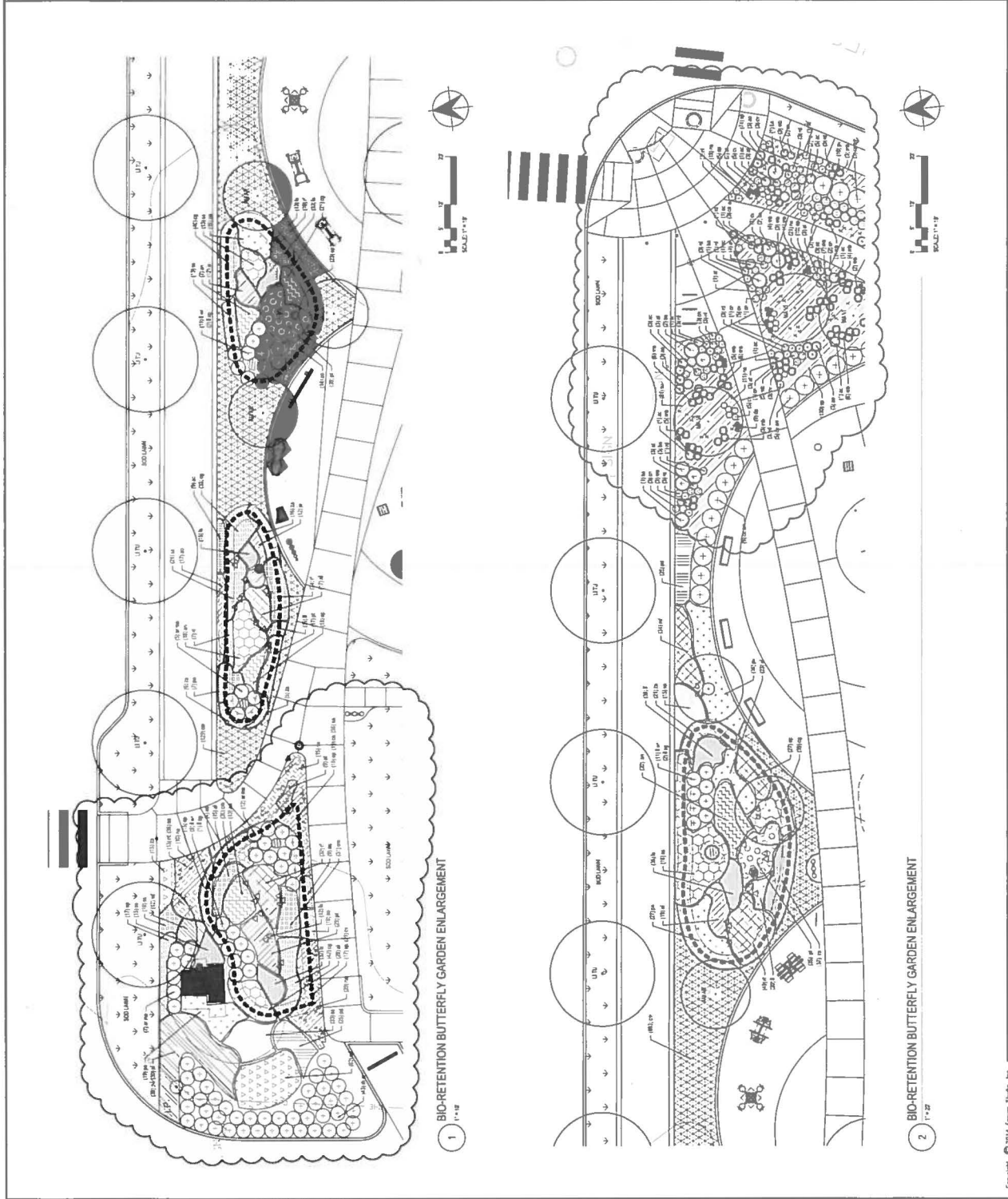


APPENDIX B
SUPPLEMENTAL ENVIRONMENTAL PROJECT – SCOPE OF WORK

In satisfaction of its obligations under this Consent Agreement and Final Order (CAFO), Organic Resource Management, Inc. (Respondent) will complete the following supplemental environmental project (SEP). A SEP is a beneficial environmental project that Respondent has voluntarily agreed to undertake as part of the resolution and settlement of this matter, but one which the Respondent is not otherwise legally required to perform and that primarily benefits public health or the environment. EPA has approved the following SEP, in addition to the mitigated administrative penalty set forth in this CAFO, for the settlement of this matter.

1. The SEP described in this Scope of Work is designed to improve stormwater quality and reduce stormwater runoff in the St. Louis Metropolitan area. In addition to protecting and improving surface water quality, the SEP also has an Environmental Justice component.
2. The SEP will involve the construction of four bioretention basins designed to collect and retain stormwater and reduce runoff from storm events. The bioretention basins will also be designed and constructed to serve as butterfly gardens.
3. The project site for the bioretention basins is Trojan Park in the City of Wellston, Missouri. The land is currently a vacant lot that is being developed into a vibrant community park. Trojan Park lies within the St. Vincent Greenway, a 7-mile urban greenway that will connect Forest Park to the University of Missouri-St. Louis.
4. Final landscaping plans for the entire project including the bioretention basins are attached to this SEP Scope of Work.
5. Respondent is coordinating activities associated with this SEP with Great River Greenways. A number of other community groups and organizations are involved in the development and revitalization of Trojan Park, including the National Recreation and Park Association.
6. Great River Greenways has selected ORF Construction as the contractor who will conduct the engineering, soil excavation, preparation, and construction of the bioretention basins.
7. The estimated completion date of the project is October 8, 2016.
8. The SEP Project Costs will be \$45,129.00, comprised of the following: the total costs for ORF Construction to build the bioretention basins is \$37,269.00; and the cost of the bioretention soil media mix is \$7,860.
9. Within one-hundred and eighty (180) days from the effective date of this CAFO, Respondent agrees that Great River Greenways and ORF Construction will have completed the construction of the bioretention basins and any affiliated prep and cleanup work at Trojan Park in connection with the bioretention basins.
10. Within sixty (60) days from the completion of the SEP, Respondent will submit to EPA a SEP Completion Report. The SEP Completion Report shall provide a description of the SEP as implemented, the final accounting of costs incurred, and the completion date of the SEP.

SYMBOL	BOTANICAL NAME	SPACING
1	Asplenium platyneuron	18" O.C.
2	Asplenium platyneuron	18" O.C.
3	Asplenium platyneuron	18" O.C.
4	Asplenium platyneuron	18" O.C.
5	Asplenium platyneuron	18" O.C.
6	Asplenium platyneuron	18" O.C.
7	Asplenium platyneuron	18" O.C.
8	Asplenium platyneuron	18" O.C.
9	Asplenium platyneuron	18" O.C.
10	Asplenium platyneuron	18" O.C.
11	Asplenium platyneuron	18" O.C.
12	Asplenium platyneuron	18" O.C.
13	Asplenium platyneuron	18" O.C.
14	Asplenium platyneuron	18" O.C.
15	Asplenium platyneuron	18" O.C.
16	Asplenium platyneuron	18" O.C.
17	Asplenium platyneuron	18" O.C.
18	Asplenium platyneuron	18" O.C.
19	Asplenium platyneuron	18" O.C.
20	Asplenium platyneuron	18" O.C.
21	Asplenium platyneuron	18" O.C.
22	Asplenium platyneuron	18" O.C.
23	Asplenium platyneuron	18" O.C.
24	Asplenium platyneuron	18" O.C.
25	Asplenium platyneuron	18" O.C.
26	Asplenium platyneuron	18" O.C.
27	Asplenium platyneuron	18" O.C.
28	Asplenium platyneuron	18" O.C.
29	Asplenium platyneuron	18" O.C.
30	Asplenium platyneuron	18" O.C.
31	Asplenium platyneuron	18" O.C.
32	Asplenium platyneuron	18" O.C.
33	Asplenium platyneuron	18" O.C.
34	Asplenium platyneuron	18" O.C.
35	Asplenium platyneuron	18" O.C.
36	Asplenium platyneuron	18" O.C.
37	Asplenium platyneuron	18" O.C.
38	Asplenium platyneuron	18" O.C.
39	Asplenium platyneuron	18" O.C.
40	Asplenium platyneuron	18" O.C.
41	Asplenium platyneuron	18" O.C.
42	Asplenium platyneuron	18" O.C.
43	Asplenium platyneuron	18" O.C.
44	Asplenium platyneuron	18" O.C.
45	Asplenium platyneuron	18" O.C.
46	Asplenium platyneuron	18" O.C.
47	Asplenium platyneuron	18" O.C.
48	Asplenium platyneuron	18" O.C.
49	Asplenium platyneuron	18" O.C.
50	Asplenium platyneuron	18" O.C.
51	Asplenium platyneuron	18" O.C.
52	Asplenium platyneuron	18" O.C.
53	Asplenium platyneuron	18" O.C.
54	Asplenium platyneuron	18" O.C.
55	Asplenium platyneuron	18" O.C.
56	Asplenium platyneuron	18" O.C.
57	Asplenium platyneuron	18" O.C.
58	Asplenium platyneuron	18" O.C.
59	Asplenium platyneuron	18" O.C.
60	Asplenium platyneuron	18" O.C.
61	Asplenium platyneuron	18" O.C.
62	Asplenium platyneuron	18" O.C.
63	Asplenium platyneuron	18" O.C.
64	Asplenium platyneuron	18" O.C.
65	Asplenium platyneuron	18" O.C.
66	Asplenium platyneuron	18" O.C.
67	Asplenium platyneuron	18" O.C.
68	Asplenium platyneuron	18" O.C.
69	Asplenium platyneuron	18" O.C.
70	Asplenium platyneuron	18" O.C.
71	Asplenium platyneuron	18" O.C.
72	Asplenium platyneuron	18" O.C.
73	Asplenium platyneuron	18" O.C.
74	Asplenium platyneuron	18" O.C.
75	Asplenium platyneuron	18" O.C.
76	Asplenium platyneuron	18" O.C.
77	Asplenium platyneuron	18" O.C.
78	Asplenium platyneuron	18" O.C.
79	Asplenium platyneuron	18" O.C.
80	Asplenium platyneuron	18" O.C.
81	Asplenium platyneuron	18" O.C.
82	Asplenium platyneuron	18" O.C.
83	Asplenium platyneuron	18" O.C.
84	Asplenium platyneuron	18" O.C.
85	Asplenium platyneuron	18" O.C.
86	Asplenium platyneuron	18" O.C.
87	Asplenium platyneuron	18" O.C.
88	Asplenium platyneuron	18" O.C.
89	Asplenium platyneuron	18" O.C.
90	Asplenium platyneuron	18" O.C.
91	Asplenium platyneuron	18" O.C.
92	Asplenium platyneuron	18" O.C.
93	Asplenium platyneuron	18" O.C.
94	Asplenium platyneuron	18" O.C.
95	Asplenium platyneuron	18" O.C.
96	Asplenium platyneuron	18" O.C.
97	Asplenium platyneuron	18" O.C.
98	Asplenium platyneuron	18" O.C.
99	Asplenium platyneuron	18" O.C.
100	Asplenium platyneuron	18" O.C.



PLANT SCHEDULE - OWNER PROVIDED

DECIDUOUS TREES									
SYM	QTY	BOTANICAL NAME	CULT/VAR	COMMON NAME	SIZE	METHOD	SPACING	DETAIL	COMMENTS
ME 2	1	Baldpate		Blue Birch	#1's	Container	SEE PLAN	SL311	Minimum 3 trees
CO 2	1	Calla acutifolia		Hickory	#1's	Container	SEE PLAN	SL311	
UC 2	8	Ulmus americana		White Elm	#1's	Container	SEE PLAN	SL311	
QJ 2	2	Quercus laevis		Swamp White Oak	#1's	Container	SEE PLAN	SL311	
QU 2	1	Quercus muhlenbergii		White Oak	#1's	Container	SEE PLAN	SL311	
QU 2	1	Quercus macrocarpa		Red Oak	#1's	Container	SEE PLAN	SL311	
DECIDUOUS UNDERSTORY TREES									
SYM	QTY	BOTANICAL NAME	CULT/VAR	COMMON NAME	SIZE	METHOD	SPACING	DETAIL	COMMENTS
MA 2	1	Magnolia officinalis		Swamp Sophora	#1's	Container	SEE PLAN	SL311	Minimum 1
CE 2	3	Cornus canadensis		Eastern Redstart	#1's	Container	SEE PLAN	SL311	Single tree
DECIDUOUS SHRUBS									
SYM	QTY	BOTANICAL NAME	CULT/VAR	COMMON NAME	SIZE	METHOD	SPACING	DETAIL	COMMENTS
IR 2	25	Ilex verticillata		Black Honeysuckle	#1's	Container	3' P.D.	SL311	
IR 2	35	Ilex verticillata		Black Honeysuckle	#1's	Container	3' P.D.	SL311	
IR 2	35	Ilex verticillata		Black Honeysuckle	#1's	Container	3' P.D.	SL311	
IR 2	35	Ilex verticillata		Black Honeysuckle	#1's	Container	3' P.D.	SL311	
IR 2	35	Ilex verticillata		Black Honeysuckle	#1's	Container	3' P.D.	SL311	
IR 2	35	Ilex verticillata		Black Honeysuckle	#1's	Container	3' P.D.	SL311	
IR 2	35	Ilex verticillata		Black Honeysuckle	#1's	Container	3' P.D.	SL311	
IR 2	35	Ilex verticillata		Black Honeysuckle	#1's	Container	3' P.D.	SL311	
IR 2	35	Ilex verticillata		Black Honeysuckle	#1's	Container	3' P.D.	SL311	
HERBACEOUS PERENNIALS & GROUNDCOVERS									
SYM	QTY	BOTANICAL NAME	CULT/VAR	COMMON NAME	SIZE	METHOD	SPACING	DETAIL	COMMENTS
an 2	25	Anemone hepatica		Swamp Liverwort	1' Quat	Container	3' P.D.	SL311	ME-LATE season interest
pr 2	25	Pulsatilla nuttalliana		Pulsatilla	1' Quat	Container	3' P.D.	SL311	EARLY-MID season interest

PLANT SCHEDULE - BIORETENTION BUTTERFLY GARDEN

ORNAMENTAL GRASSES & SEDGES									
SYM	QTY	BOTANICAL NAME	CULT/VAR	COMMON NAME	SIZE	METHOD	SPACING	DETAIL	COMMENTS
ig 1	1	Iris germanica		Bur Sedge	1' Quat	Container	3' P.D.	SL311	
ps 1	1	Panicum polyanthemum		Polka Panicum	1' Quat	Container	3' P.D.	SL311	
ps 1	1	Panicum polyanthemum		Polka Panicum	1' Quat	Container	3' P.D.	SL311	
ps 1	1	Panicum polyanthemum		Polka Panicum	1' Quat	Container	3' P.D.	SL311	
HERBACEOUS PERENNIALS & GROUNDCOVERS									
SYM	QTY	BOTANICAL NAME	CULT/VAR	COMMON NAME	SIZE	METHOD	SPACING	DETAIL	COMMENTS
al 1	1	Alchemilla liliifolia		Lady's Mantle	1' Quat	Container	3' P.D.	SL311	ME-LATE season interest
al 1	1	Alchemilla liliifolia		Lady's Mantle	1' Quat	Container	3' P.D.	SL311	ME-LATE season interest
al 1	1	Alchemilla liliifolia		Lady's Mantle	1' Quat	Container	3' P.D.	SL311	ME-LATE season interest
al 1	1	Alchemilla liliifolia		Lady's Mantle	1' Quat	Container	3' P.D.	SL311	ME-LATE season interest
al 1	1	Alchemilla liliifolia		Lady's Mantle	1' Quat	Container	3' P.D.	SL311	ME-LATE season interest
al 1	1	Alchemilla liliifolia		Lady's Mantle	1' Quat	Container	3' P.D.	SL311	ME-LATE season interest
al 1	1	Alchemilla liliifolia		Lady's Mantle	1' Quat	Container	3' P.D.	SL311	ME-LATE season interest
al 1	1	Alchemilla liliifolia		Lady's Mantle	1' Quat	Container	3' P.D.	SL311	ME-LATE season interest
al 1	1	Alchemilla liliifolia		Lady's Mantle	1' Quat	Container	3' P.D.	SL311	ME-LATE season interest
al 1	1	Alchemilla liliifolia		Lady's Mantle	1' Quat	Container	3' P.D.	SL311	ME-LATE season interest

PLANT SCHEDULE - POLLINATOR GARDEN & GENERAL LANDSCAPE

DECIDUOUS TREES									
SYM	QTY	BOTANICAL NAME	CULT/VAR	COMMON NAME	SIZE	METHOD	SPACING	DETAIL	COMMENTS
AC 2	2	Acer rubrum		Red Maple	12' Cal	5.5' B	SEE PLAN	11.311	REDUCE TREE SHADE TO STAKE
QU 2	1	Quercus laevis		Swamp White Oak	12' Cal	5.5' B	SEE PLAN	11.311	
DECIDUOUS UNDERSTORY TREES									
SYM	QTY	BOTANICAL NAME	CULT/VAR	COMMON NAME	SIZE	METHOD	SPACING	DETAIL	COMMENTS
MA 2	1	Magnolia officinalis		Swamp Sophora	#1's	Container	SEE PLAN	SL311	Minimum 1
CE 2	3	Cornus canadensis		Eastern Redstart	#1's	Container	SEE PLAN	SL311	Single tree
DECIDUOUS SHRUBS									
SYM	QTY	BOTANICAL NAME	CULT/VAR	COMMON NAME	SIZE	METHOD	SPACING	DETAIL	COMMENTS
IR 2	25	Ilex verticillata		Black Honeysuckle	#1's	Container	3' P.D.	SL311	
IR 2	35	Ilex verticillata		Black Honeysuckle	#1's	Container	3' P.D.	SL311	
IR 2	35	Ilex verticillata		Black Honeysuckle	#1's	Container	3' P.D.	SL311	
IR 2	35	Ilex verticillata		Black Honeysuckle	#1's	Container	3' P.D.	SL311	
IR 2	35	Ilex verticillata		Black Honeysuckle	#1's	Container	3' P.D.	SL311	
IR 2	35	Ilex verticillata		Black Honeysuckle	#1's	Container	3' P.D.	SL311	
IR 2	35	Ilex verticillata		Black Honeysuckle	#1's	Container	3' P.D.	SL311	
IR 2	35	Ilex verticillata		Black Honeysuckle	#1's	Container	3' P.D.	SL311	
IR 2	35	Ilex verticillata		Black Honeysuckle	#1's	Container	3' P.D.	SL311	
ORNAMENTAL GRASSES & SEDGES									
SYM	QTY	BOTANICAL NAME	CULT/VAR	COMMON NAME	SIZE	METHOD	SPACING	DETAIL	COMMENTS
ig 1	1	Iris germanica		Bur Sedge	1' Quat	Container	3' P.D.	SL311	
ps 1	1	Panicum polyanthemum		Polka Panicum	1' Quat	Container	3' P.D.	SL311	
ps 1	1	Panicum polyanthemum		Polka Panicum	1' Quat	Container	3' P.D.	SL311	
ps 1	1	Panicum polyanthemum		Polka Panicum	1' Quat	Container	3' P.D.	SL311	
HERBACEOUS PERENNIALS & GROUNDCOVERS									
SYM	QTY	BOTANICAL NAME	CULT/VAR	COMMON NAME	SIZE	METHOD	SPACING	DETAIL	COMMENTS
al 1	1	Alchemilla liliifolia		Lady's Mantle	1' Quat	Container	3' P.D.	SL311	ME-LATE season interest
al 1	1	Alchemilla liliifolia		Lady's Mantle	1' Quat	Container	3' P.D.	SL311	ME-LATE season interest
al 1	1	Alchemilla liliifolia		Lady's Mantle	1' Quat	Container	3' P.D.	SL311	ME-LATE season interest
al 1	1	Alchemilla liliifolia		Lady's Mantle	1' Quat	Container	3' P.D.	SL311	ME-LATE season interest
al 1	1	Alchemilla liliifolia		Lady's Mantle	1' Quat	Container	3' P.D.	SL311	ME-LATE season interest
al 1	1	Alchemilla liliifolia		Lady's Mantle	1' Quat	Container	3' P.D.	SL311	ME-LATE season interest
al 1	1	Alchemilla liliifolia		Lady's Mantle	1' Quat	Container	3' P.D.	SL311	ME-LATE season interest
al 1	1	Alchemilla liliifolia		Lady's Mantle	1' Quat	Container	3' P.D.	SL311	ME-LATE season interest
al 1	1	Alchemilla liliifolia		Lady's Mantle	1' Quat	Container	3' P.D.	SL311	ME-LATE season interest
al 1	1	Alchemilla liliifolia		Lady's Mantle	1' Quat	Container	3' P.D.	SL311	ME-LATE season interest

BULBS									
SYM	QTY	BOTANICAL NAME	CULT/VAR	COMMON NAME	SIZE	METHOD	SPACING	DETAIL	COMMENTS
al 1	1	Allium sphaerocephalum		Round-headed Allium	1' Quat	Container	3' P.D.	SL311	EARLY-MID season interest

*Refer to Planting Plan for Location. Provide 2 bulbs per symbol. All plantings to be installed in a random, naturalistic pattern. Initial bulbs at a rate of 5 or 7 per grouping. Mix three bulb types randomly per grouping throughout the designated area to be planted.

- NOTES**
- ALL PLANTINGS IN BIORETENTION GARDEN TO RECEIVE 2" DEPT - 34" TRAP ROCK MULCH. SEE SPECIFICATIONS.
 - ALL OTHER PLANTINGS IN LANDSCAPE BEDS TO RECEIVE 2" LAYER OF COMPOSTED LEAF MULCH, 40 BARK MULCH.
 - CONTRACTOR TO VERIFY ALL PLANT QUANTITIES.

DEAL

Project: **TROJAN PARK**

1540 BETHEL AVE
WELLSTON, MISSOURI 63133

PREPARED BY:

Great Rivers Greenway
In association with
National Recreation and Park Association
The City of Wellston, Missouri

Soil Loss
COUSAR COUNTY
PARKS

FORUM
2199 PINNACLES BUSINESS CENTER DR.
ST LOUIS, MISSOURI 63114
PH: 314.421.8390 FX: 314.421.7770
CLAS Engineer

DATE: 10/24/2014

800 SOUTH HANCOCK AVENUE
ST LOUIS, MISSOURI 63119
PH: 314.421.8390

Lead Engineer
JAMES MCDONNELL

425 N. HOOPER AVE. SUITE 200
CHESTERTOWN, MISSOURI 63017
PH: 314.642.1589
TRAC Engineer

411 NORTH 10th ST.
ST LOUIS, MISSOURI 63101
PH: 314.421.2388

Consulting Geographer
ROEMER WAGNER

881 WEST GULF DR
JAMESVILLE, MISSOURI 63110
PH: 636.246.2812

PROJECT: **TROJAN PARK**

1540 BETHEL AVE
WELLSTON, MISSOURI 63133

DATE/NO. ISSUE	Description	Date
10/24/2014	PRELIMINARY	10/23/14
11/10/2014	REVISED	11/10/14

Drawing Title: **PLANTING LEGEND**

Drawing No: **L310**

Scale: AS SHOWN